

# Wi-Fi Smart Smoke Detector Manual

## Product Review:

This product is a smart photoelectric smoke sensor, with ultra-low-power MCU design. It is an early warning device, can't detect gas, heat, or fire, nor stop fire or put out fire, it is capable of real-time detecting the presence of smoke, once the detect danger of fire smoke, red LED will be ON and alarming to alert you and your family timely. It can be widely used at household, lounge, coffee house, dancing hall and any other places need fire alarm monitoring.

## Specification:

Input Voltage: DC3V LR03

Static Current:  $\leq 15\mu\text{A}$

Alarm Current:  $\leq 160\text{mA}$

Low-Voltage Notification:  $\leq 2.4\text{V}$

Alarm Sound Level: 70db/1m

Wi-Fi: 802.11 b/g/n

Detecting range: 20m<sup>2</sup>

Installation method: Ceiling Mounted

Working Temperature:  $-10^{\circ}\text{C}\sim+50^{\circ}\text{C}$

Working Humidity  $\leq 95\%\text{RH}$



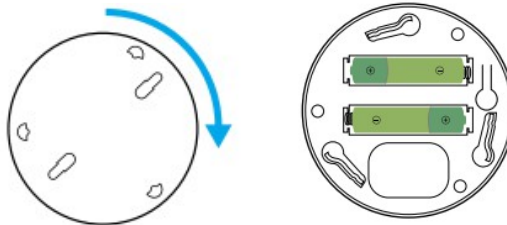
## How to use:

1. Download Tuya Smart APP, or scan the QR code to download

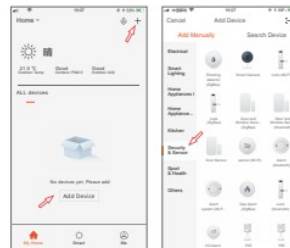


Android / IOS

2. Clockwise rotation the mounting bracket take out and prepare to install battery



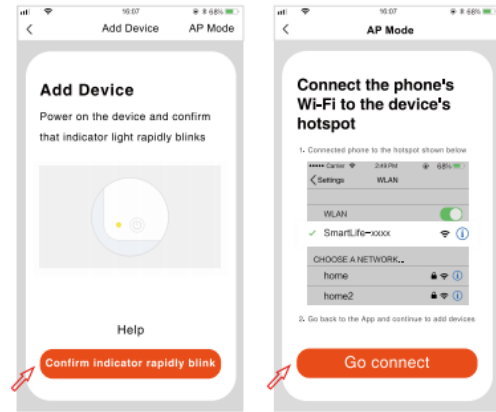
3. Register the APP with your cellphone number. Then click "+" on "My Home" or click on the blank to "Add Device", select security sensor, and click sensors.



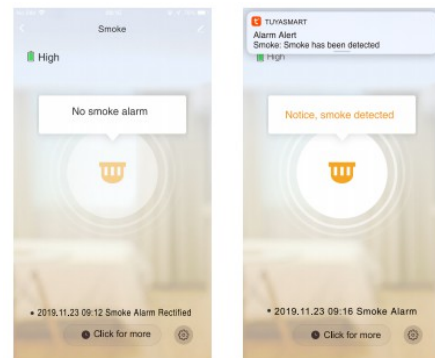
4. Press the RESET for more than 5 seconds with the PIN the LED indicator flashes quickly, start network configuration Automatically, input the WIFI Code to star connecting.



5. Press Reset for 5 seconds with PIN when configuration Network, indicator flashes slowly, start manual network Configuration mode, input Wi-Fi account and code to add Device.



6. Configuration network successfully, click smoke detector, long Press TEST, buzzer will have DI DI sound, app receive notification “detecting smoke” , release TEST, APP will show “No smoke detected”



#### Mute Function:

Please make sure there is no real danger of fire when using mute function, under known and non-fire alarm condition, Please do not block or by any other form to prohibit alarming, press the TEST/MUTE button to lower sensitivity and relieve alarm.